

Alton Museum of History and Art, Inc.

Winter 2007

News & Views

Winter/Spring Special Events

*February 2008
Black History Month*

*February 22, 2008
Robert Wadlow
Birthday
Celebration*

*March 2008
Women's
History Month*

***The Museum
will be
Closed for Easter***

*April 27, 2008
Sunday, 1pm - 4pm
Shurtleff Reunion
Grace Monroe
Classroom*

*May 18, 2007
Sunday, 2pm - 4pm
Miles Davis
Jazz Celebration
Trimpe Hall
Lewis & Clark
College*

2809 College Avenue, Alton, Illinois 62002

618-462-2763

Alton Museum is asking for financial help

Alton Museum of History & Art, Inc. is seeking help to keep museum doors open. A tax levy is critical to preserve history in Alton, Illinois for generations to come. If those of us who are alive today don't collect artifacts and preserve the past it will be lost forever. Private fundraising and volunteer support will not guarantee survival of the museum once the aging support system is gone.

Supporters are forming a grassroots campaign. To get on the ballot we have a lot to do between now and then. We must circulate petitions and gather signatures.

The museum continues to apply for grants. Grants, when received, are used for new exhibits, preservation of the collection, refurbishing old exhibits, programs, etc.

Grants are not given used to pay an employee, for maintenance, for office supplies, for utilities, for light bulbs, etc. (There are 157 light bulbs in the museum.) The lack of financial support has eliminated a paid staff. The volunteers enjoy history and sharing it with people. Our volunteers contributed over 3,000 hours this past year. We are grateful for such support.

Alton Museum of History & Art, Inc. is asking for a tax levy, 2 cents of one hundred dollar evaluation. The funds would help pay for maintenance, utilities and adding paid employees to keep up with service demands. Most of the people coming in to see the museum are tourists. The museum is their primary destination.

Exhibits include: Western Military Academy & World War II Congressional Medal of Honor Butch O'Hara, Korean War exhibit, Dolls of the World, Civil War & Lincoln, Elijah P. Lovejoy, Underground Railroad, History of local African-American families, Piasa Bird, Robert Wadlow, Fancy Work, Alton Prison, Shurtleff College and Monticello College. The museum has been criticized for not selling two houses in Alton. The two houses were gifted to the museum by Corida Koenig Hanna in memory of her father. The gift came with legal strings attached. The property cannot be sold until the grandson has passed. The grandson is approximately 35, and we wish for him a long and healthy life. The Museum is in dire need of your financial and community support!

Remember Your Museum

Remember your Museum with Life Memberships, Donations, Memorials and Bequests. Our long-term financial stability depends on our biggest goal; to get an endowment fund so we can pay for general operation. With rising fuel, insurance, and upkeep costs, it is vital that we provide financial planning that will enable us to preserve our history for future generations. Nobody wants to give money to pay the power bill, yet the power bill has to be paid. (1) Send a donation in his or her name to memorialize a special person.... (2) Write a specific bequest to the Alton Museum of History & Art, Inc. into your will....(3) If you are looking for a charitable tax deduction talk to your lawyer and/or

accountant about donating to the Alton Museum of History & Art, Inc....(4) Consider a Charitable Remainder Trust....Talk to your lawyer about setting up this irrevocable trust that permits you to donate assets to the Alton Museum of History & Art, Inc. while enjoying income and tax benefits during your lifetime....Gifts of property or stocks, etc., which have appreciated, avoid capital gain taxes and you are entitled to a current tax deduction when your assets are transferred. These funds are also excluded from your estate for estate tax purposes as well.... (5)Consider a monetary donation in any amount. It all adds up!

New Members

Shirley Buddell
Godfrey
Knights of Columbus
Council No. 7804
Godfrey
Perry L. Covuey
Alton
Dorothy Droste
Alton
Morgan Glenn
Manchester
Carole A. Howard
Manchester
Harold M. Johnson
Alton
Kay & Dick Massey
Alton
Barbara & Michael McGrew
Godfrey
Elaine Noasconco
Hartford
Citizens for
Mayor Don Sandidge
Alton
Fred & Beverly Young
Alton
Painters District Council #
58
Collinsville
Roberts Motors, Inc
Alton

Don't forget to use your e-Scrip Card

All of our loyal members who shop at Schnuck's Grocery Stores will be able to participate in Schnuck's Community Card Program. This will help raise money to support the museum. Simply pick up the registration form at any of the local Schnuck's Stores, fill out the requested information on the form. Our I.D. Number is [500016743](https://www.schnucks.com/500016743). You will then be given a Schnuck's e-Scrip Community Card. In order to activate the card you must either call 1-800-931-6258 or visit www.escrip.com/schnucks.jsp. Be sure to show your card at the checkout each time you purchase anything at Schnuck's. We will receive up to 3% of your purchase amount. There is no additional cost to you. Thank you for helping the Museum as you shop. We appreciate Schnuck's for helping us to raise money for repairs, purchases and other items the Museum may need.

We are a tax-exempt – 501 © (3) – organizations. We need your support.

Recent Donations

~Alton's Women's Council: Scrapbook, Folder of Records, Newsprint Block
~ Mary Ann Barnard: Postcard of Chippewa, Manistee, Michigan
(Where Robert P. Wadlow died July 14, 1940.)
~Richard Goldman: "Christmas Eve" oil on canvas painting estimated to have been created in the late 1800's, depicts a scene on Christmas where the intersection of Henry and Seventh streets now is located.
~Jeanette A. "Nancy" Kaus: World War II Military Uniform
~Vivian Shearburn: Black Moleskin Cape, Fox Fur Stole, Mink Fur Stole, Framed Prints
by Ruth Means, Paul Simon Family Photo Seasons Greetings.

Welcome!

Message from the President

Folks - sadly, thieves in the museum are not rare. Thieves steal paintings and artifacts for collectors, for sale on e-bay and for sale as antiques.

We want to show paintings & artifacts to a large audience. It is almost impossible to make artifacts theft-proof without ruining the experience for visitors

We are very aware of the changing world and the threats that face us, and therefore we have recently renewed all our security measures.

That's the only way to make sure that nothing is stolen.

We can not talk about our security system because that would be like giving an instruction manual to someone who wanted to steal something.

Secrecy is one of our greatest defenses.

Children are cautioned to look and not touch.

We have found children to be very cooperative.

It was a very embarrassed adult visitor who set off an alarm recently.

(Yes, he touched.)

*Charlene Johnson
President,
Board of Directors*

*"History outlives those who would destroy it."
...anonymous*

Volunteers Needed

Here is a list of tasks for which the Museum needs your help...

Grant Writer
Brochure Delivery
Tour Guide/Gift Shop
Organizing Volunteer Program
Cataloging/Photographing Artifacts
Organizing Storage
General Housekeeping
Painting/Carpentry/Electric

Plans for 4th Sunday afternoon Lecture Series on Local History & Art (2008 – 2009) Exact Dates and Times TBA

- | | |
|---|--|
| <ol style="list-style-type: none"> 1. Bellefontaine Cemetery
– <i>Joanne Stevens</i> 2. History of Alton Schools 3. Owens-Illinois/Illinois Glass
Company – <i>Harold Meisenheimer</i> 4. Alton firefighters 5. Alton Police Department 6. Western Military Academy 7. African-American History 8. City of Alton Homes
On Upper Alton/Milton, Middletown
and North Alton Areas - <i>Terry Sharp</i> | <ol style="list-style-type: none"> 9. History of Chautauqua 10. History of Grafton and Elsay. 11. History of Alton Theatres 12. Principia College (on the Woolly Mammoth) 13. Alton Trolleys, trains, and vehicles 14. History of Pietown 15. Alton High and Marquette High 16. Shurtleff College History <p><i>(Abraham Lincoln visits to Alton will be added as research is completed)</i></p> |
|---|--|

Spotlight on Lovelle Gibson

Having donated many artifacts to the museum, Lovelle Gibson is a good friend. Some of the many artifacts she had donated are:

A Framed & Signed Photograph of Lyman Trumbull, A Framed Photo of Lincoln/Douglas Sq., A Framed Art Print of Piasa Bird by Alton Artist Martha Paquin, A Photograph "Vintage Alton Culture" 8x10 B&W by Reiss Studio in Alton, Quart Milk Bottle/Walnut Grove Dairy, 1928 Tattler Yearbook, 1st National

Bank Toy Bank, Small China Tea Cup - U.S. Post Office, Book "Return of the Enola Gay", White Metal Noll's Ice Cream Tray, Gold & Black Metal Noll's Ice Cream Tray, 1861 Tax Record of Alton, Illinois, Plate of 1st Methodist Church, 1950 Alton City Directory, Booklet "WMA Cadet Life, Plats: (1) Residence of John L. Blair, (2) Residence of C. Rodemeyer's Carriage & Wagon Man, (3) Residence of J. F. Hayner, (4) Residence of Robert B.

Smith, (5) Residence of Mayor Stephen Harriman Long, (6) A. Clifford Family Supply, (7) Henry Watson's Stone Quarries and (8) Illinois Glass Company, Numerous Alton, Illinois Vintage Postcards and Numerous Vintage Alton, Illinois News Clippings. The museum is grateful to Lovelle for her generous donations.

Koenig House

The lower floor of the Koenig House is now set up as a teaching tool so that school children can experience life as it would have been in an upper middle class household at the end of the nineteenth century. The house has been arranged so that it appears that the Koenig family has just momentarily left. Toys are left where they were played with, the adults have been using the old "view master" stereoscope, Mr. Koenig was just writing at his desk and the cook has set the table for a formal dinner: perhaps Mrs. Koenig has invited Mr. and Mrs. Pfeiffenberger over to see the finished interiors. The house is fitted with all the newest conveniences such as indoor plumbing, a coal furnace and electricity. The kitchen even has a new-fangled electric "ice box". The maid has set the table in a formal way using the home's finest dishes and cutlery.

The house, while not furnished with pieces original to the home, has a décor much as it would have been in 1900. The rooms are filled with artifacts from notable Altonians. In the foyer is a portrait of Corida Koenig who willed the house to the Museum. Family portraits also fill the "ladies' parlor". The large painting in the room as well as the small portrait on porcelain and the wicker rocker were acquired by Eunice Smith on her around-the-world tour. On the side table is a very rare wedding loving cup made in England and used at a Haskell wedding. The small china plate in the curio cabinet is the only known portrait of the little girl for whom the play house on Henry Street was built. The grand piano, as well as the "practice" piano in the next room, is original to the house.

In the "men's parlor" is a large Eastlake cylinder desk once owned by

Robert Sawyer, a noted attorney, and a roll top desk owned by Paul Cousley, one of the owners of **The Telegraph** newspaper. The dining room is decorated with Civil War era lithographs as well as two rare desert paintings by Ruth Means. The table, chairs, and china belonged to Emma Sawyer. The large china cabinet was owned by Harriet Haskell and spent many years in her office.

Koenig House holds the Museum's collection of decorative arts but it is not the main Museum. The main Museum is housed in historic Loomis Hall on the S.I.U.E. Dental School campus. Loomis Hall houses Alton's history from 1800-present and has far too many exhibits to describe here. Please stop in some time for a visit. To continue the work of preserving Alton's history, we warmly invite you to join the Museum.

Happy New Year!!!!

You are cordially invited to the

Alton Museum of History and Art's

First Annual Fundraising Non-Event

April 1st, 2008

Cocktails will NOT be served at 6:00 p.m.

Dinner will NOT be served at 7:00 p.m.

Our program will NOT begin at 8:00 p.m.

The funds raised will help support our Lincoln Exhibit as well as the Museum's day to day operations. The Museum believes the cost of purchasing items for an evening event could be much better used to support the preservation of the great heritage of our community.

What could be the cost of attending a fundraising event?

Tickets for the meal	\$100
Babysitter	\$40
Formalwear	\$200
Gas	\$10
<hr/> Total	<hr/> \$350

Supporting the Museum's Mission:

~PRICELESS~

Please send your non-event expenses to:

**2809 College Avenue
Alton, IL 62002**



CAMPAIGN FUNDRAISING

Alton Museum of History and Art, Inc.

Loomis Hall
2809 College Avenue
Alton, Illinois 62002

PHONE:
(618) 462-2763

FAX:
(618) 465-2857

E-MAIL:
altonmuseum@yahoo.com

I want to help the museum with its financial need.
Please apply my enclosed tax free donation for:

DONATION

\$250.00
\$100.00
\$ 50.00
_____ Other

MEMBERSHIP

\$20.00 Senior
\$25.00 Single
\$30.00 Family
\$40.00 History Lover
\$50.00 Patron of the Arts
\$100.00 Business
\$1,000.00 Life
\$5,000.00 Benefactor

IRS NON-PROFIT ORGANIZATION

We're on the Web!

See us at:
www.altonmuseum.com

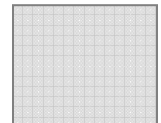
About Our Organization...

The Alton Museum of History and Art was founded in 1971 to preserve the great heritage of our

community. Through the exhibits, we share with you our past and present so that you too may discover the

people, places and events that influenced our ancestors and continue to shape our destiny.

Alton Museum of History and Art, Inc.
2809 College Avenue
Alton, Illinois 62002



TO: